

# Using Data Placemats to Understand and Interpret Evaluation Data

MeHAF Learning Community  
Meeting

March 8, 2017



**S. E. Foster Associates**  
Research & Evaluation Consulting

# What is a Data Placemat?

- Graphic display of evaluation data
- Enables evaluator to share information with grantees before it is final
- Grantees discuss, interpret the meaning of the information, and offer explanations and examples
- Evaluators use the input for further analysis and report writing

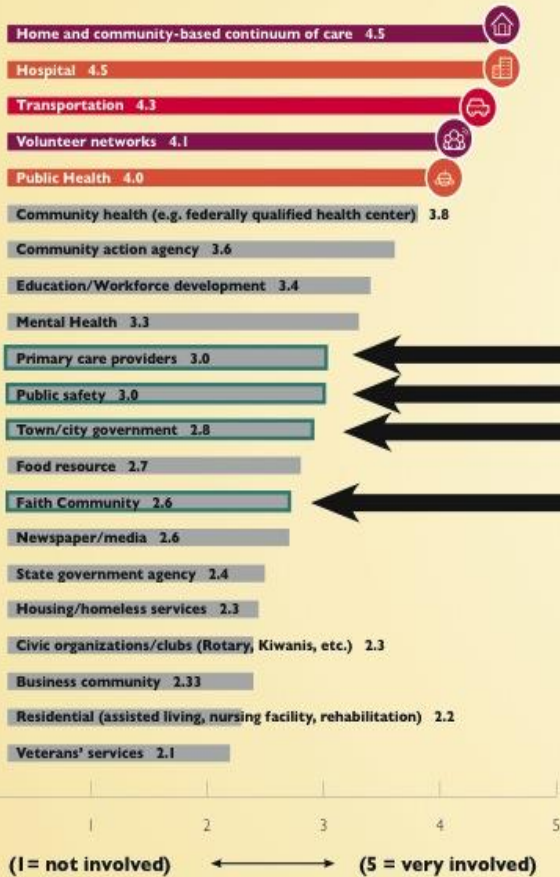
1 2 3  
**Healthy Communities**

1 2 3  
**Access to Quality Care**

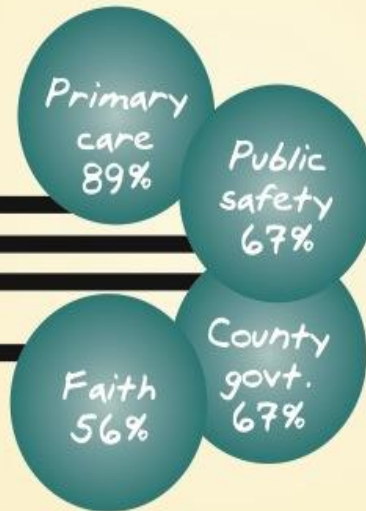
1 2 3  
**Thriving in Place**

# I. Partnerships

How involved is each sector?



Grantees want more involvement from:



45% of grantees wanted more involvement from volunteer networks, state government, veteran's services, civic organizations

## “ Grantee Reflections

*“The level of commitment has been strong, even when the grind of implementation kicks in.”*

*“We have a keen interest in palliative/end of life care. WE decided to take it on as an advisory council.”*

*“We met with each medical practice—they LOOKED committed, but there were very few requests from them to get more engaged. The patient-centered medical home movement has pushed PCPs to have people connected to community, but they are not interested in doing more than they have to.”*

Add your reflections below:



\*\*Scored 2 or below: Library, county government agency, substance use prevention/treatment, tribal council  
 Data Sources: Summer 2016 Annual Survey, project director interviews, and progress reports.

# Placemat Information Sources

- ***Surveys***: 27 of 29 (93%) grantees  
(19 Planning, 9 Implementation)
- ***Interviews***: 28 of 29 (97%) of project directors
- ***Progress reports***

# Core Questions

- What questions do you have about the data?
- What do you see in the data? Is this what you expected?
- What is one thing you noticed that's interesting to you?

Questions? Comments?



**S. E. Foster Associates**  
Research & Evaluation Consulting